

۲۰

$$8! \cdot 4! = 967680 \quad (1)$$

$$7! \cdot 4! \binom{8}{4} = 8467200 \quad (2)$$

$$11! - (8! \cdot 4! + 7! \cdot 4! \binom{8}{4}) = 20481920 \quad (3)$$

$$4! \cdot 3! \cdot 4! = 4912 \quad (4)$$

$$3! \times 2 \times 4! \times 2! \times 2 = 13824 \quad (5)$$

$$4 \times 0 \times 0 = 1 \quad (6)$$

$$4 \times 4 \times 3 = 48 \quad (7)$$

$$4 \times 0 \times 3 = 0 \quad (8)$$

$$4 \times 3 \times 1 + 3 \times 3 \times 2 = 30 \quad (9)$$

$$4 \times 0 \times 2 = 0 \quad (10)$$

$$3 \times 3 \times 2 = 18 \quad (11)$$

$$4 \times 0 \times 3 - 1 = 29 \quad (12)$$

$$1 \times 3 \times 2 + 1 \times 3 \times 3 = 10 \quad (13)$$

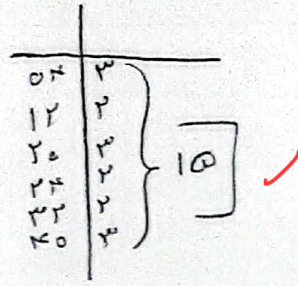
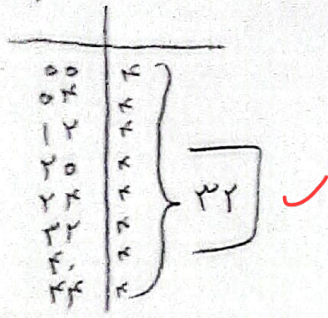
$$1 \times 0 \times 2 = 0 \quad (14)$$

$$1 \times 3 \times 2 = 6 \quad (15)$$

$$1 \times 0 \times 1 = 10 \quad \checkmark$$

$$1 \times 1 \times 1 = 9 \quad \checkmark$$

(1) (11)



(1) (12) 6

$$1 \times 0 \times 1 = 10 \quad \checkmark$$

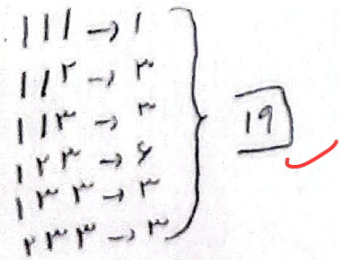
$$1 \times 1 \times 1 = 10 \quad \checkmark$$

(1) (13)

$$\frac{9!}{3!2!} = 126 \quad \checkmark$$

(1) (14) 7

$$\frac{0!}{1!1!} + \frac{0!}{1!1!} + \frac{0!}{1!1!} = 3 \quad \checkmark$$



(1) (15)

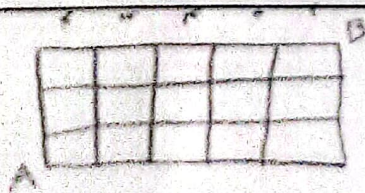
(1) (16) 8

$$\binom{4}{1} \binom{3}{1} = 12 \quad \checkmark$$

(1) (17)

$$\binom{1}{1} = \frac{1!}{0!1!} = 1 \quad \checkmark$$

(1) (18) 9



$$1 \times 0 \times 1 \times 1 \times 1 \times 1 = 10 \quad \checkmark$$

(1) (19)

$$1 \times 0 \times 1 \times 1 \times 1 = 10 \quad \checkmark$$

(1) (20) 10