

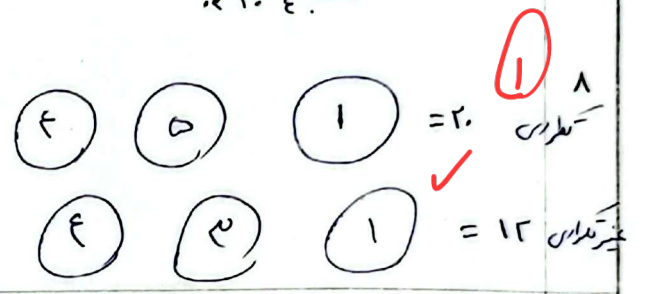
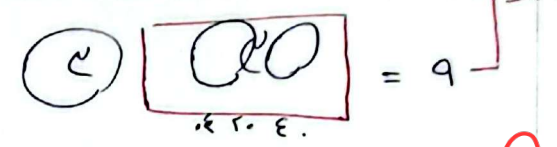
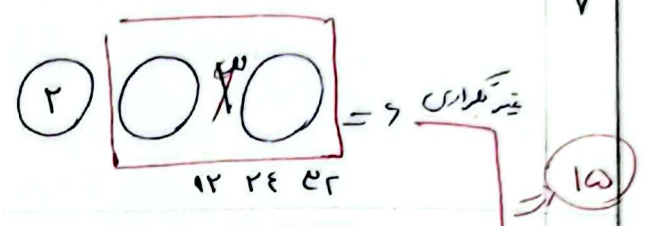
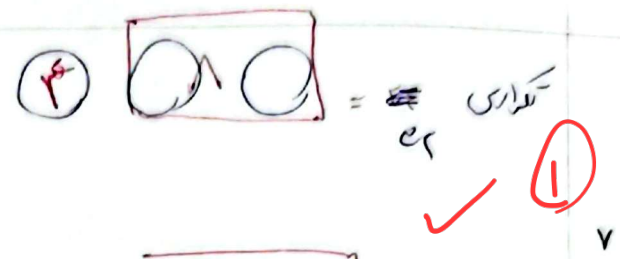
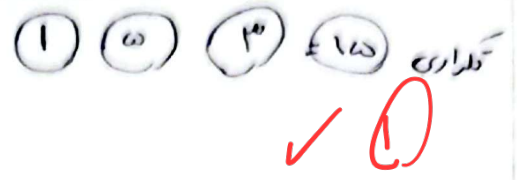
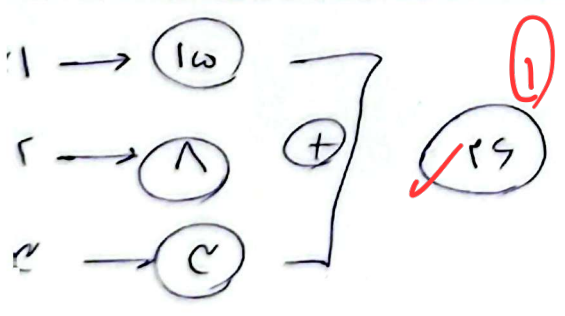
$$\binom{9}{2} \times \binom{8}{2} = 10 \times 9 = 90$$

OR, e.h

$$\frac{n!}{r! \times (n-r)!} = \frac{n!}{r! \times r!} = 45$$

~~...~~

$$r^2 = 2^2 = 4$$



$$\frac{6!}{2! \times 4!} = \frac{6 \times 5 \times 4 \times 3 \times 2 \times 1}{2 \times 1 \times 4 \times 3 \times 2 \times 1} = 15$$

$$\begin{aligned} 11132 &\rightarrow \frac{5!}{2! \times 3!} = 10 \\ 11122 &\rightarrow \frac{5!}{3! \times 2!} = 10 \\ 11232 &\rightarrow \frac{5!}{2! \times 2! \times 1!} = 30 \end{aligned}$$

Sum = 50